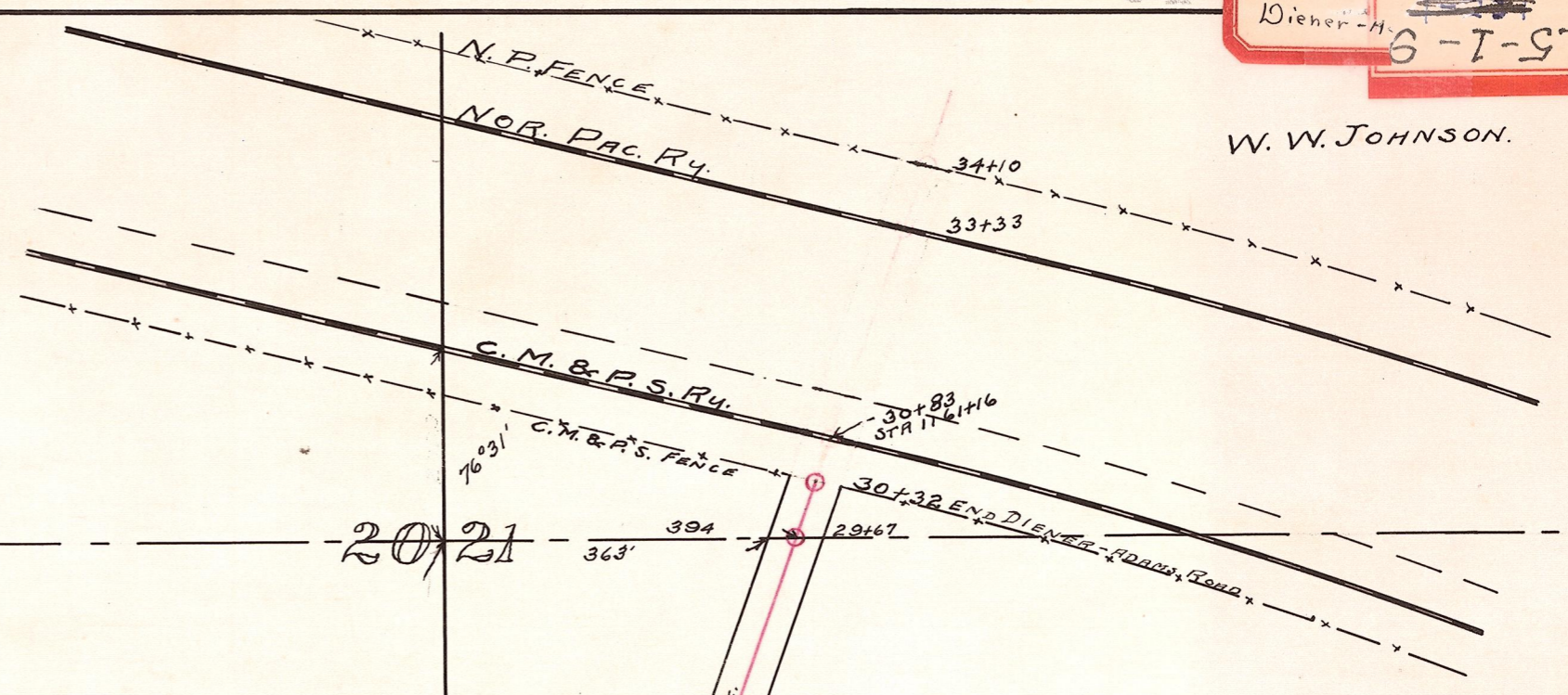
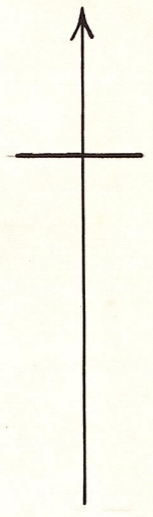


W. W. JOHNSON.



C. F. DIENER.

JAMES ADAMS.



20 21

17+12
Δ19°50' R.

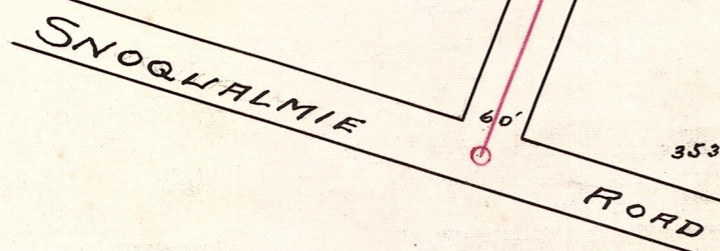
8+68
Δ21°44' L.

1006.5
1094.8
1802
244 R.
N 0° 0' E.

N 19° 50' E.

N 21° 44' E.

252.5 20 21
29 28



TALMADGE RD.

Cevalia Rd.

PLAT OF
DIENER-ADAMS ROAD
SECTIONS 20, 21, & 29 T. 20N. R. 14E.
OFFICE OF COUNTY ENGINEER
ELLENSBURG, WASH. APRIL 4th. 1911.
AMENDED SEPTEMBER 6th. 1911.
SCALE 1" = 200'

John T. Jordan
ENGR. KITTITAS COUNTY