

DATA FOR PARABOLIC CURVE

DISTANCE	OFFSET FROM $\frac{1}{2}$
0'-0"	14.00'
6'-3"	14.08'
12'-6"	14.31'
18'-9"	14.70'
25'-0"	15.25'
31'-3"	15.85'
37'-6"	16.81'
43'-9"	17.83'
50'-0"	19.00'

**NOTES**

NOTE 1: 16 EACH NEW W6x15 GUARDRAIL POSTS (TYPE I) WITH DOUBLE BEAM GUARDRAIL AS NOTED ON THE PLAN.

**QUANTITIES**

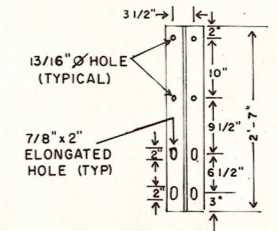
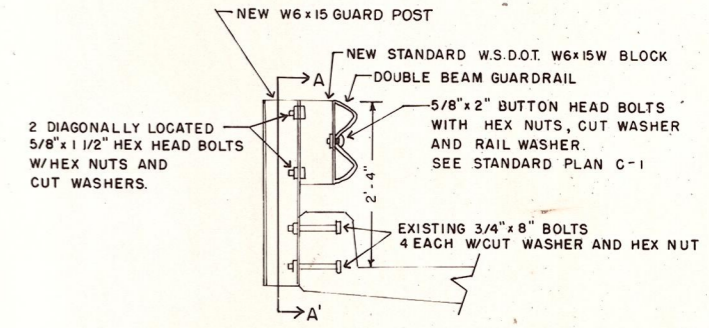
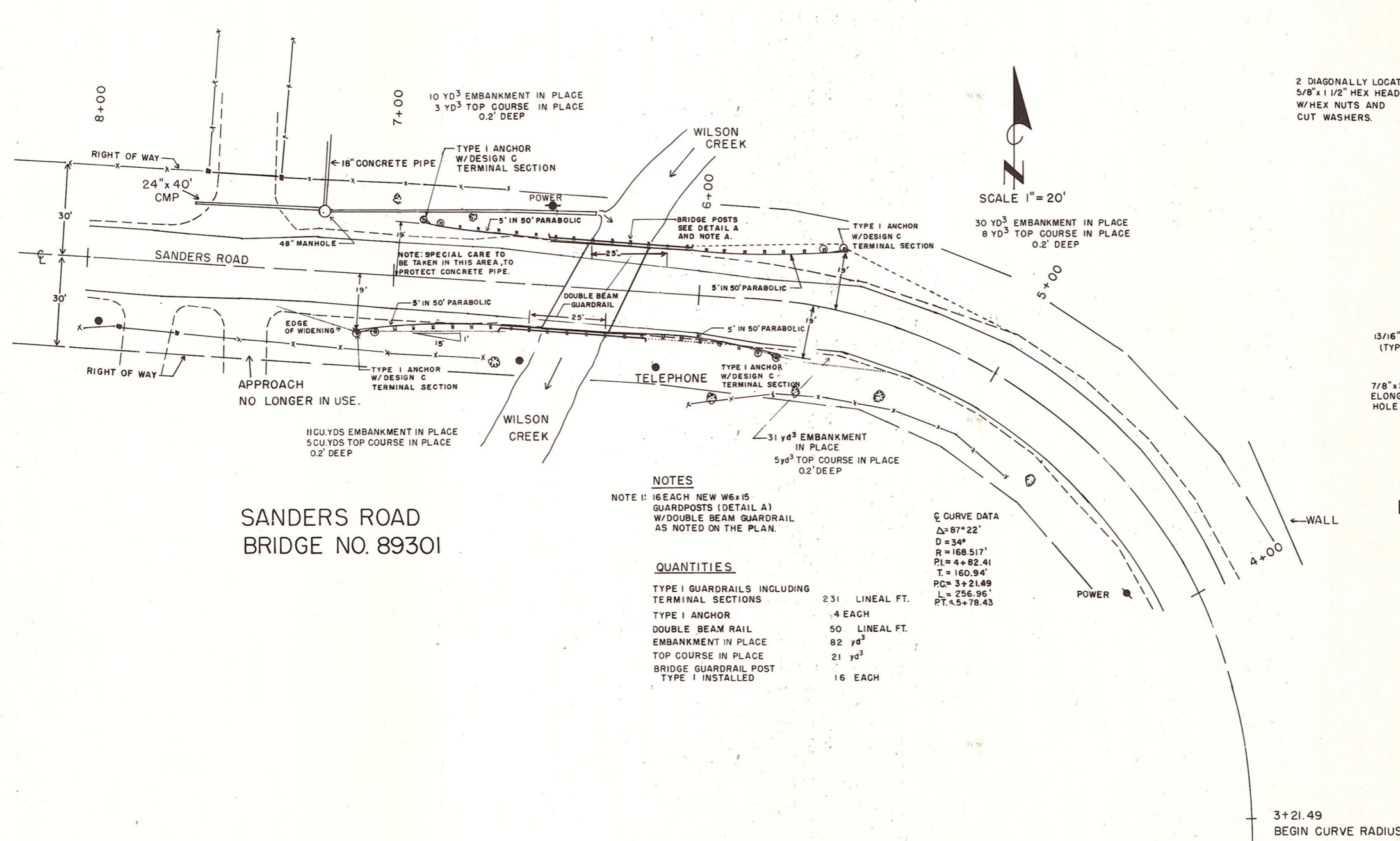
TYPE I GUARDRAILS INCLUDING TERMINAL SECTIONS	231	LINEAL FT.	4 EACH
TYPE I ANCHOR	2	LINEAL FT.	50
DOUBLE BEAM RAIL	50	LINEAL FT.	82
EMBANKMENT IN PLACE	82	YD <sup>3</sup>	21
TOP COURSE IN PLACE	21	YD <sup>3</sup>	16
BRIDGE GUARDRAIL POST TYPE I INSTALLED	16	EACH	

**SANDERS ROAD**  
**BRIDGE NO. 89301**

DEPT. OF PUBLIC WORKS  
**KITTITAS COUNTY**  
ELLENSBURG, WASHINGTON  
VANTAGE HIGHWAY BRIDGE ET. AL.  
APPROACH GUARDRAILS

SCALE: H 1" = 20'  
DRAWN BY DLT DATE SEPT 1981 SHEET 14 OF 14  
APPROVED: *[Signature]* DATE 1/27/83 DIRECTOR OF PUBLIC WORKS





DATA FOR PARABOLIC CURVE

DISTANCE	OFFSET FROM C
0' - 0"	14.00'
6' - 3"	14.08'
12' - 6"	14.31'
18' - 9"	14.70'
25' - 0"	15.25'
31' - 3"	15.95'
37' - 6"	16.81'
43' - 9"	17.83'
50' - 0"	19.00'

**NOTES**  
 NOTE 1: 16 EACH NEW W6x15 GUARDPOSTS (DETAIL A) W/DOUBLE BEAM GUARDRAIL AS NOTED ON THE PLAN.

**QUANTITIES**

TYPE I GUARDRAILS INCLUDING TERMINAL SECTIONS	231 LINEAL FT.
TYPE I ANCHOR	4 EACH
DOUBLE BEAM RAIL	50 LINEAL FT.
EMBANKMENT IN PLACE	82 yd³
TOP COURSE IN PLACE	21 yd³
BRIDGE GUARDRAIL POST TYPE I INSTALLED	16 EACH

**CURVE DATA**  
 $\Delta = 87^\circ 22'$   
 $D = 34^\circ$   
 $R = 168.517'$   
 $PI = 4 + 82.41$   
 $T = 160.94'$   
 $PC = 3 + 21.49$   
 $L = 256.96'$   
 $PT = 5 + 78.43$

**SANDERS ROAD  
 BRIDGE NO. 89301**

**BRIDGE GUARDRAIL POST  
 TYPE I**

DEPT. OF PUBLIC WORKS  
**KITTITAS COUNTY**  
 ELLENSBURG, WASHINGTON  
 VANTAGE HIGHWAY BRIDGE ET. AL.  
 APPROACH GUARDRAILS

SCALE: 1" = 20'      CRP 14-80  
 DRAWN BY DLT DATE SEPT. 1981      SHEET 14 OF 14  
 APPROVED: 4/27/83      *J. J. Berdan*  
 DATE      DIRECTOR OF PUBLIC WORKS