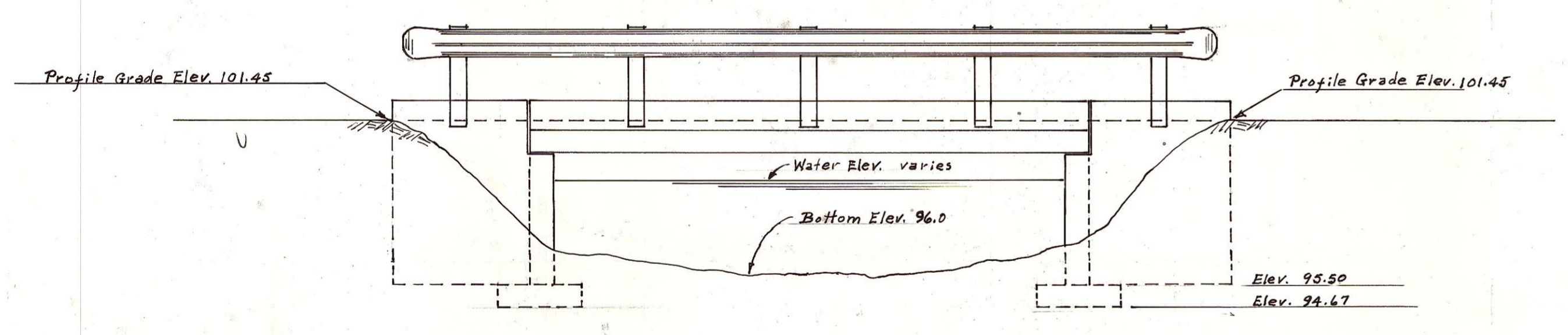


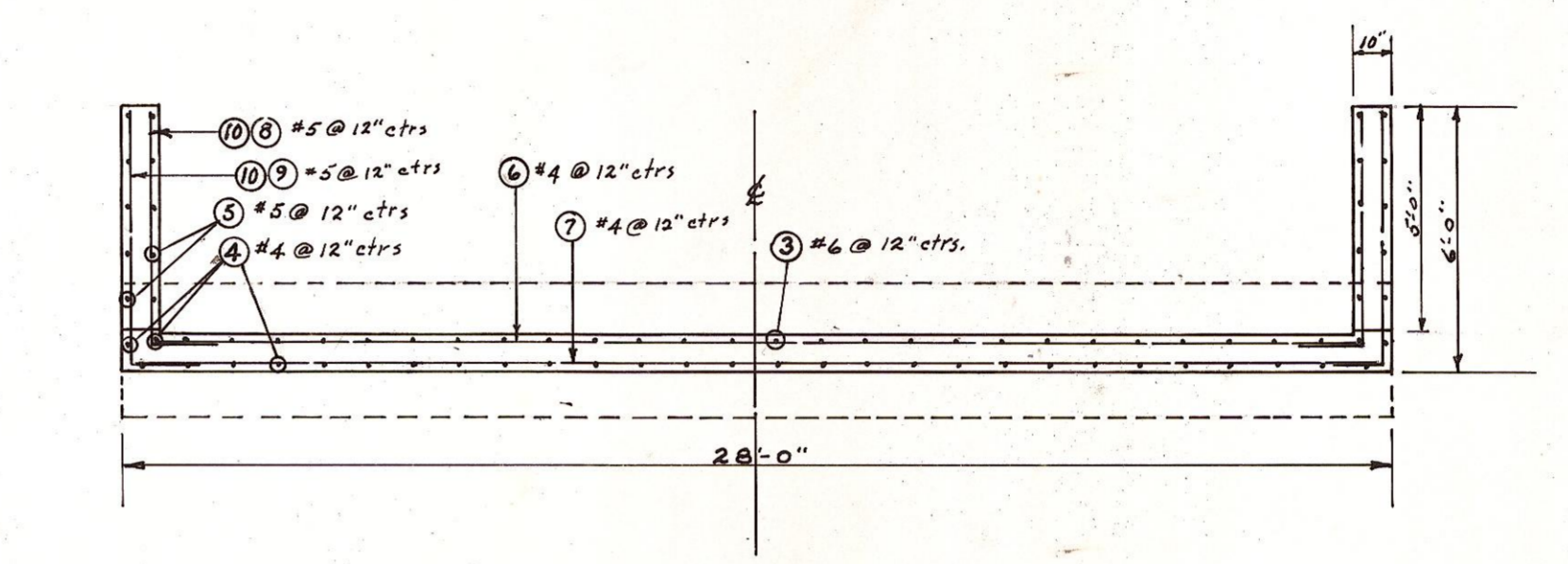
PLAN
Scale 1/2" = 1'-0"



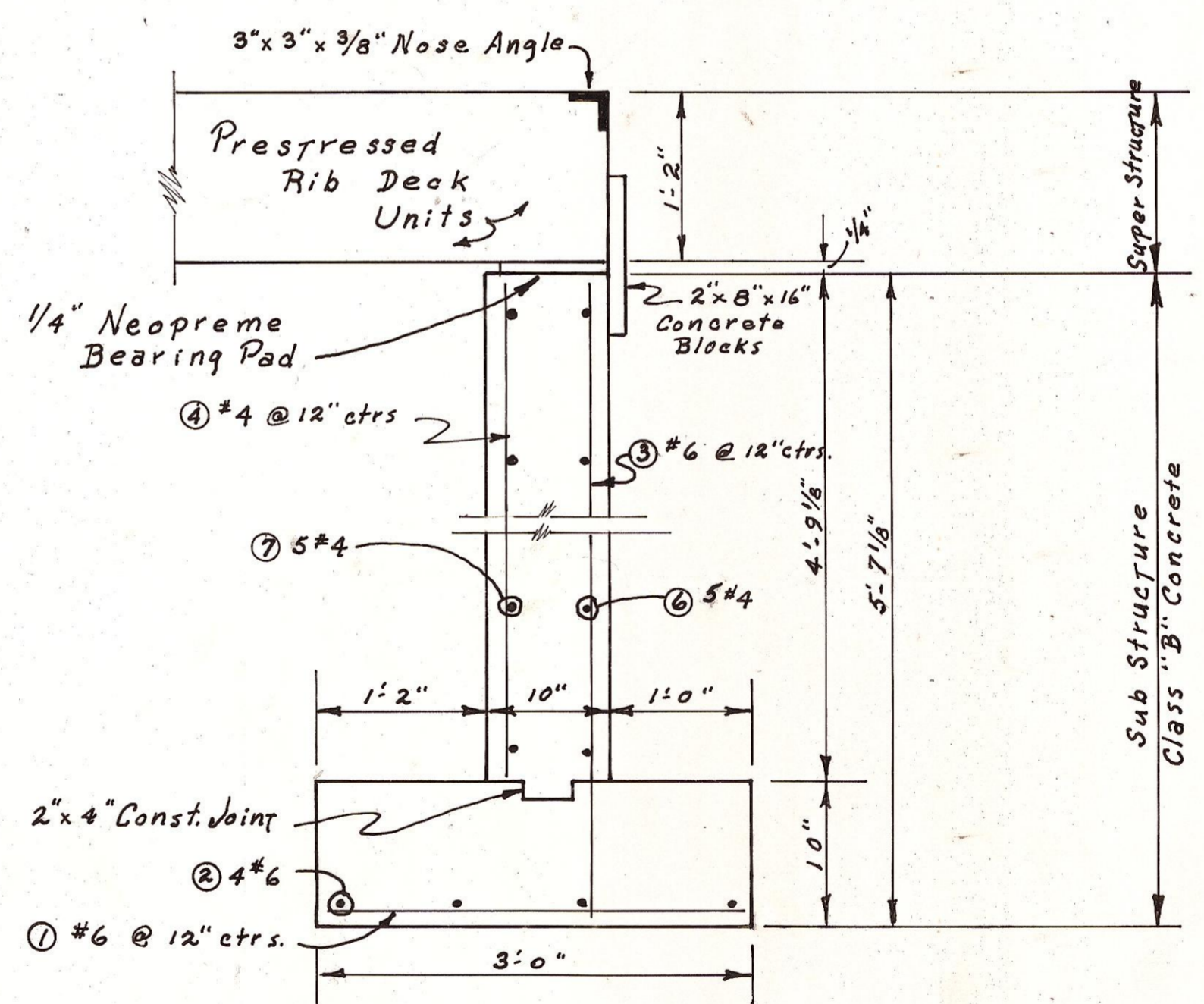
ELEVATION

ELEVATION DATUM-ASSUMED = 100.00

SUMMARY OF QUANTITIES		
Item No.	Item	Quantities
1.	Structure Excavation	85 c.y.
2.	Concrete Class "B"	17 c.y.
3.	Reinforcing Steel	2,180 lbs
4.	Superstructure, in place	Lump Sum
5.	Beam Guard Railing	35 lin.ft.
6.	Remove Existing Bridge	Lump Sum

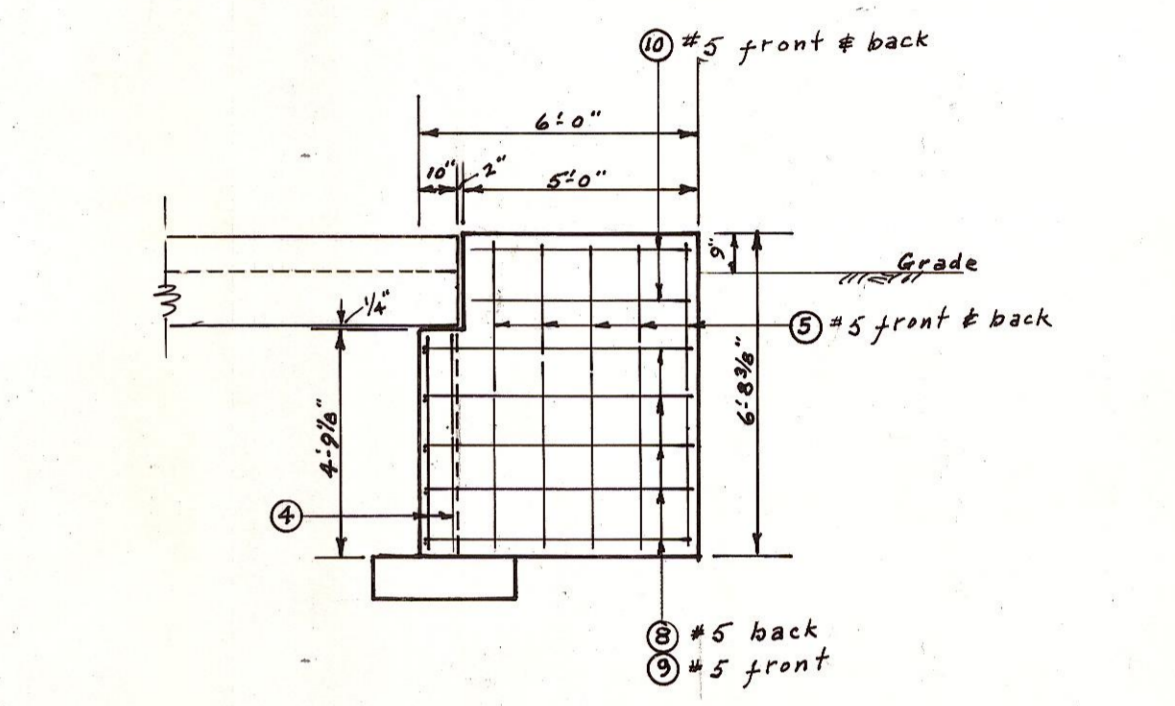


ABUT. 1 & 2
Scale 1/4" = 1'-0"



SECTION A-A
Scale 1" = 1'-0"

SEE SHEET No. 6 FOR GENERAL NOTES
LOADING - H 20



SECTION BRIDGE RAILING
Scale 3/4" = 1'-0"

SINGLE BEAM GUARD RAILING

REINFORCING STEEL BARS					
Bar	Size	Location	No.	Lgth	Description
①	6	Footing	58	2'-9"	Str.
②	6	Footing	8	27'-9"	"
③	6	Abut. Wall, Vert. Back Face	52	5'-4"	"
④	4	" " " Front Face	64	4'-7"	"
⑤	5	Wing Walls, Vert. Front & Back	40	6'-5"	"
⑥	4	Abut. Wall, Horz. Back Face	10	26'-7"	"
⑦	4	" " " Front Face	10	27'-9"	"
⑧	5	Wing Wall, Horz. Front Face	20	6'-6"	"
⑨	5	" " " Back Face	20	7'-3"	"
⑩	5	" " " Front & Back Face	16	4'-9"	Str.

OFFICE OF COUNTY ROAD ENGINEER
KITITAS COUNTY
 ELLENSBURG, WASHINGTON
BRIDGE No. 79123
EAST KITITAS ROAD
 SCALE: 1/4" = 1'-0" CRP 7-68
 DRAWN BY M.F.G. DATE Aug. 1968 SHEET 3 OF 6
 APPROVED: 9-9-68 DATE [Signature] COUNTY ROAD ENGINEER