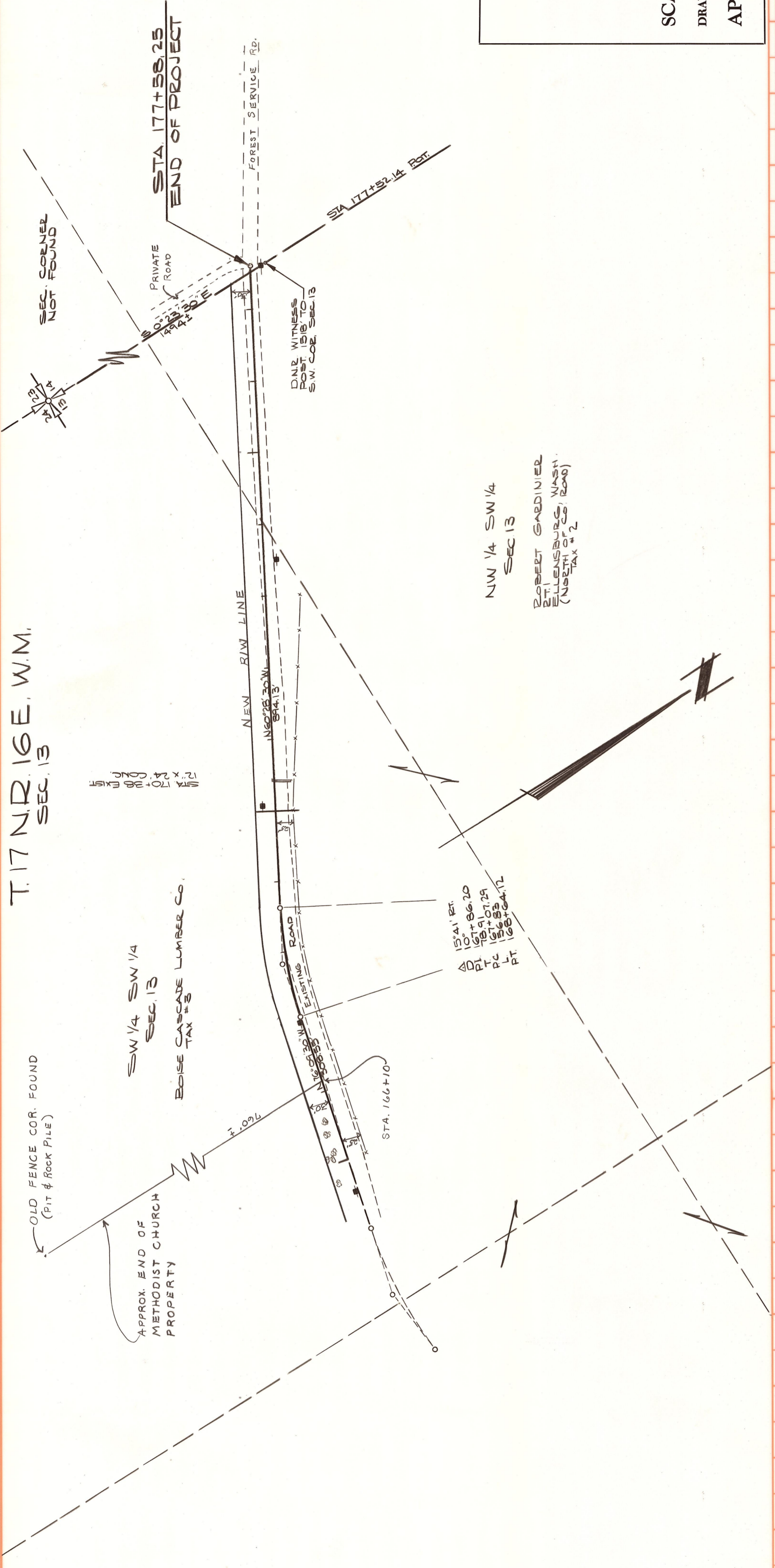


T.17 NR. 16 E. W.M.
SEC. 13



NW 1/4 SW 1/4
SEC 13
ROBERT GARDINER
211 ELLENBURG, WASH.
(N. 1/2 SEC. 13, T. 17 N., R. 16 E.)

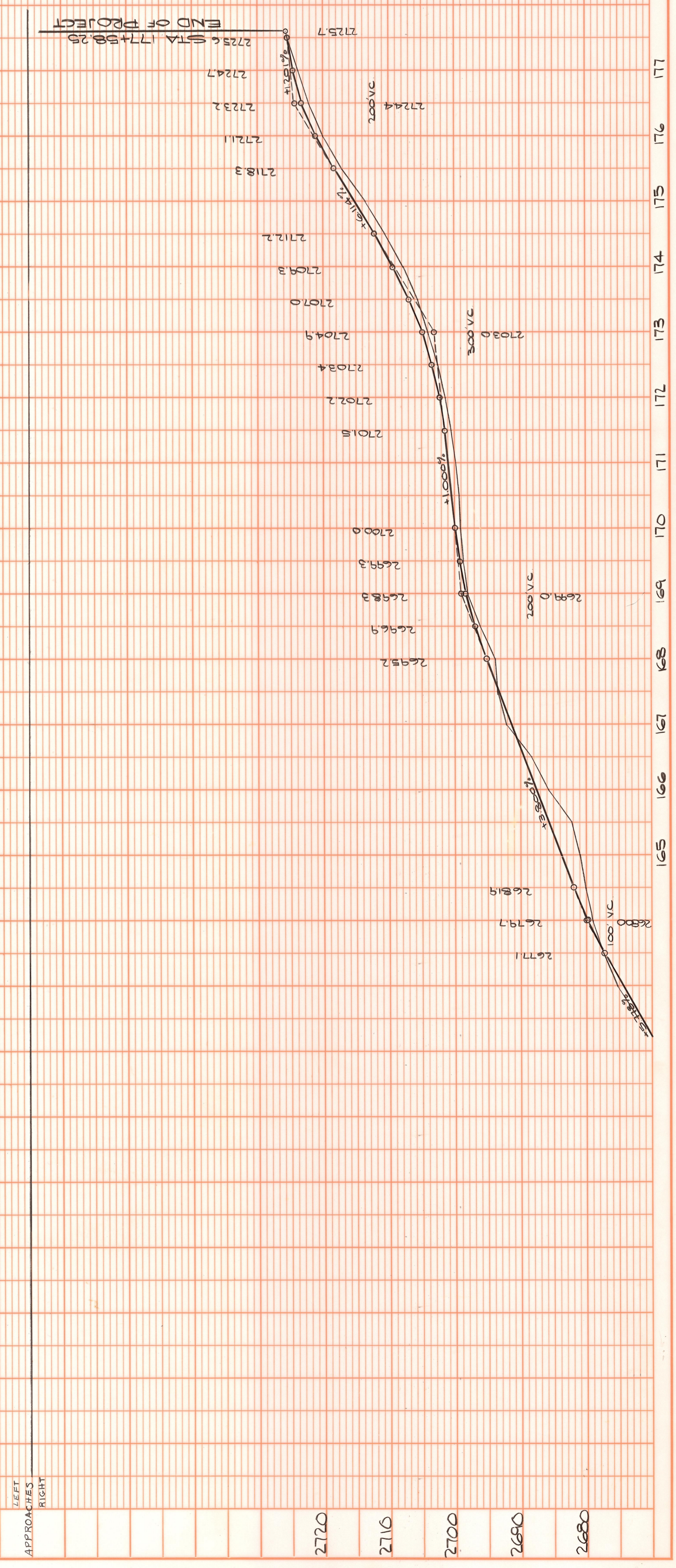
SE 1/4 SW 1/4
SEC 13

OFFICE OF COUNTY ROAD ENGINEER
KITTITAS COUNTY
ELLENSBURG, WASHINGTON
MANASTASH ROAD
LENGTH - .75 MILE

SCALE: H $\frac{1}{2}$ " = 100'
V $\frac{1}{8}$ " = 10'

DRAWN BY SAY DATE AUG, 1973 SHEET 2 OF 2

APPROVED: *Edwin E. Blomquist*
DATE 10/22/73 COUNTY ROAD ENGINEER



PLAN

NO. _____

DATE _____

BY _____

REVISIONS

NO. _____

DATE _____

BY _____

REVISIONS

PROFILE

NO. _____

DATE _____

BY _____

REVISIONS

NO. _____

DATE _____

BY _____

REVISIONS

