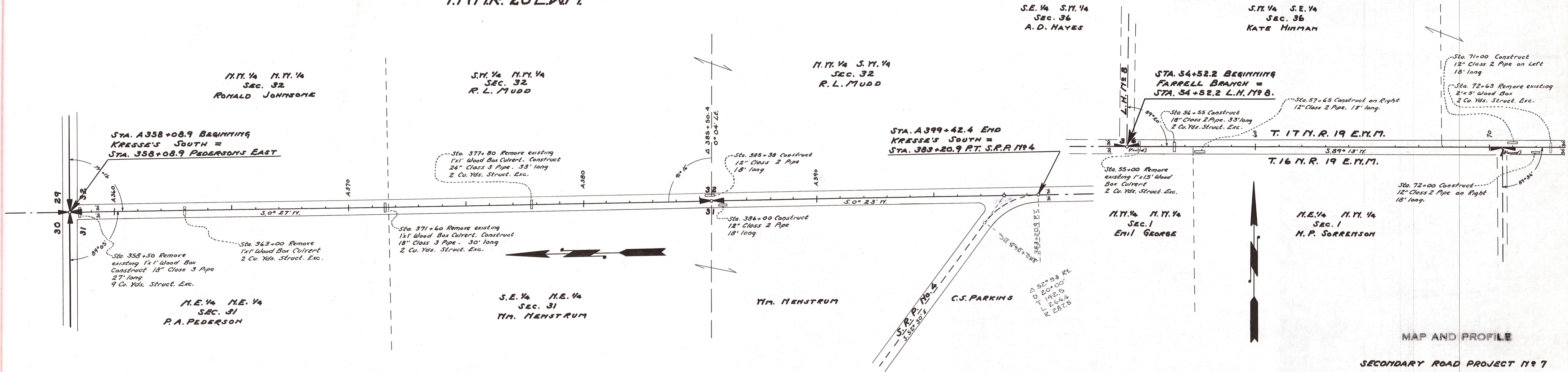
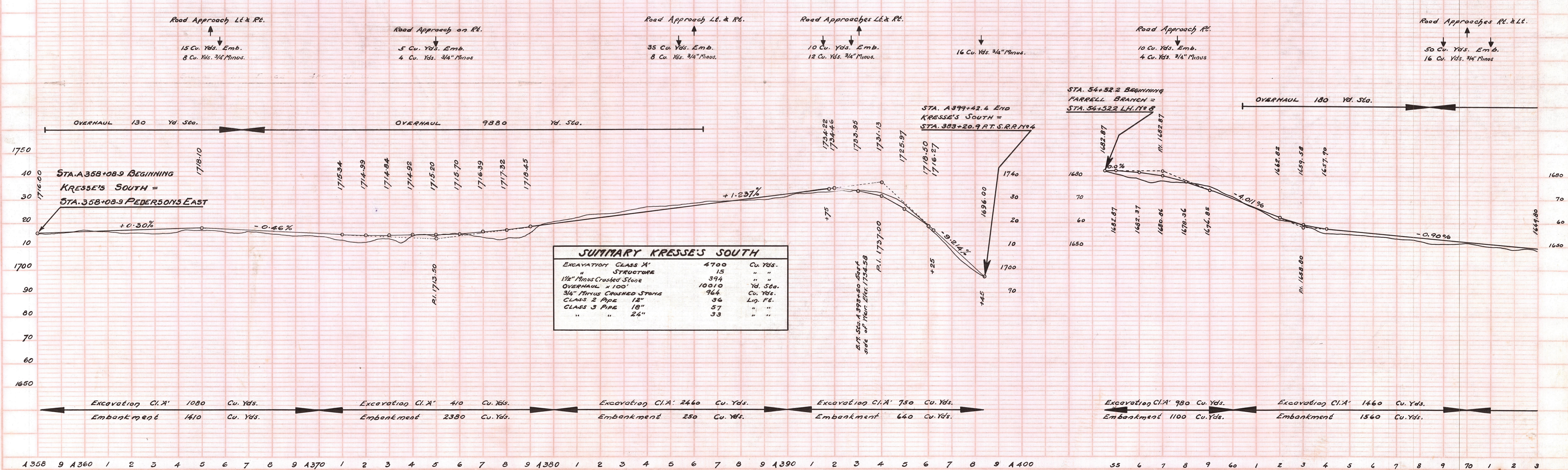


T.17 N.R. 20 E.W.M.



MAP AND PROFILE
SECONDARY ROAD PROJECT N° 7
KITITAS COUNTY

APPROVED:
SCALE: HORIZ. ONE IN. = 50 FT. VERT. ONE IN. = 20 FT.
SHEET 3 OF 6 SHEETS



EXCAVATION CLASS X'	4700	Cu. Yds.
SPRINTING	15	" "
1 1/2\"/>		
OVERHAUL x 100'	10010	Yd. Sqa.
3/4\"/>		
CLASS 2 PIPE 12"	36	LIN. FT.
CLASS 3 PIPE 18"	57	" "
" " 24"	33	" "

PLAN
DESIGNED BY
CHECKED BY
DATE
NOTE BOOK ALIGNMENT CHECKED
NO. OF WAYS CHECKED

PROFILE
DESIGNED BY
CHECKED BY
DATE
NOTE BOOK GRADES CHECKED
NO. OF WAYS CHECKED