

15-4-91
4-2-15

KITTITAS COUNTY,
WASHINGTON.

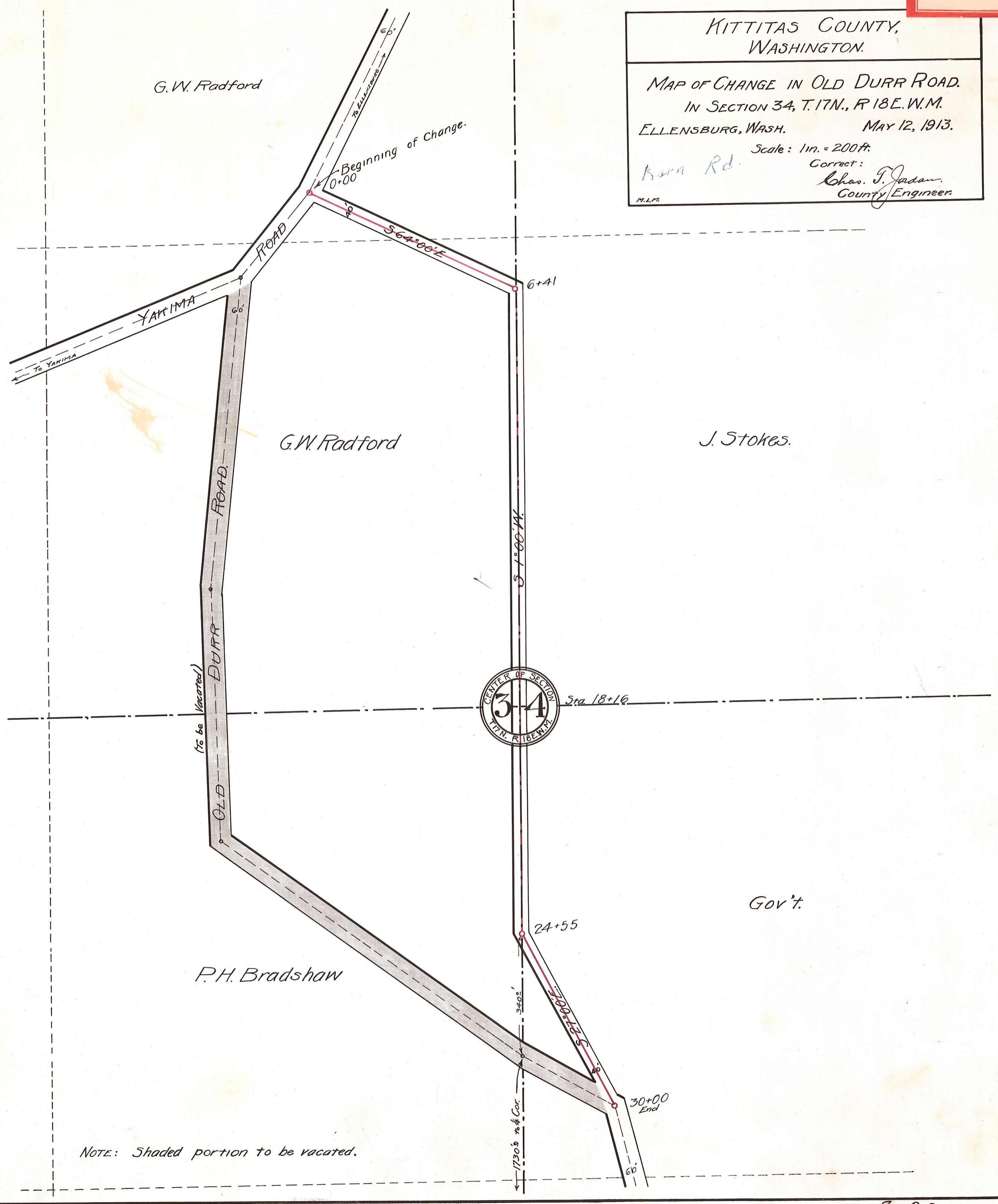
MAP OF CHANGE IN OLD DURR ROAD.
IN SECTION 34, T.17N., R.18E.W.M.
ELLENSBURG, WASH. MAY 12, 1913.

Scale: 1 in. = 200 ft.

Kern Rd.

Correct:
Chas. J. Jordan
County Engineer

M.L.P.



NOTE: Shaded portion to be vacated.

17-1