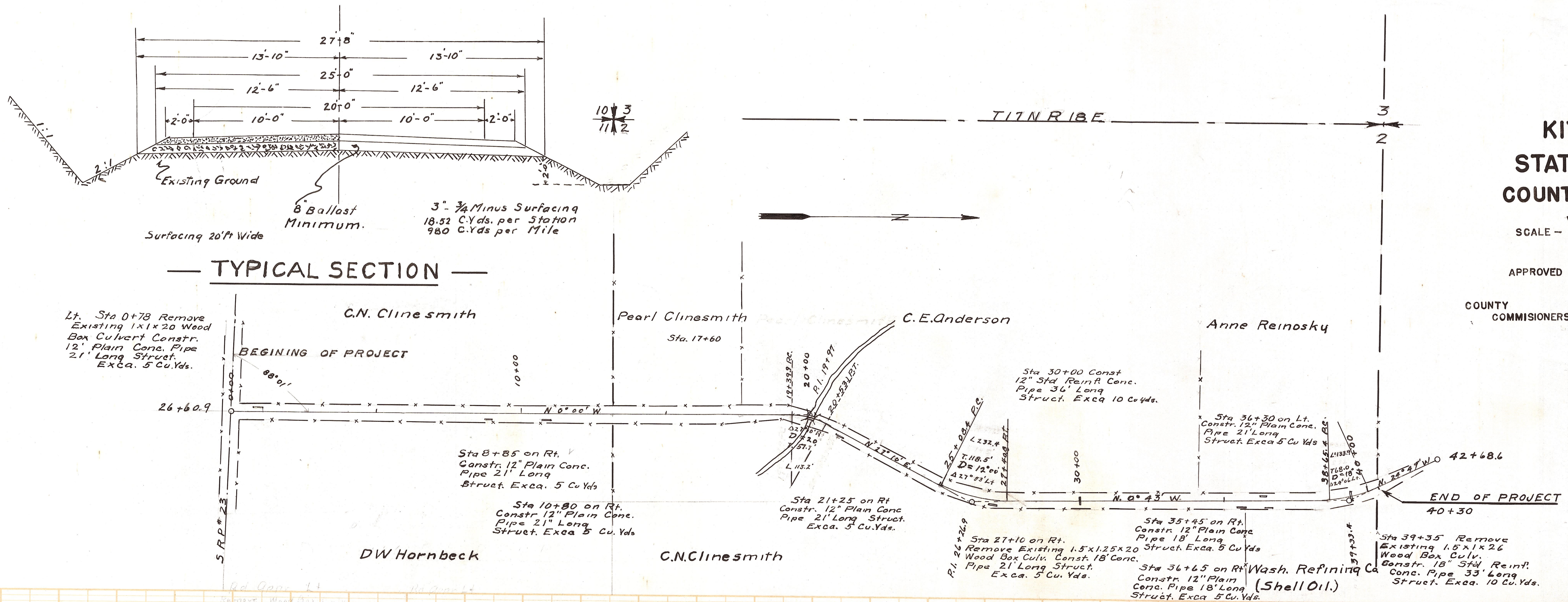


**KITTITAS COUNTY  
STATE OF WASHINGTON  
COUNTY ROAD PROJECT NO. 41-7**

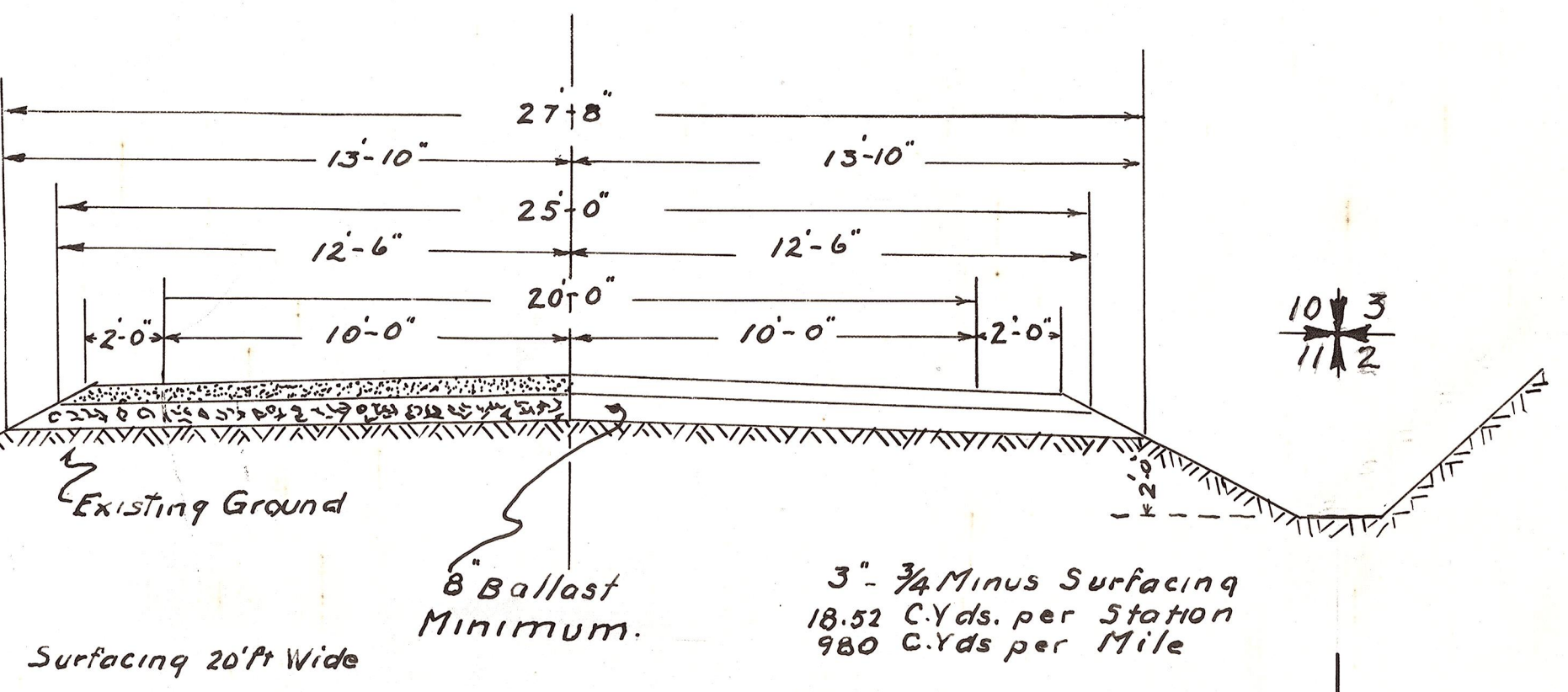
VERTICAL ONE INCH = 20  
SCALE - HOR. ONE INCH = 200 FEET

APPROVED *J. Dunbar* COUNTY ROAD ENGR.

COUNTY COMMISSIONERS  
*W. D. Brown* CHAIRMAN  
*J. Wood* MEMBER  
*Bill Rumsford* MEMBER



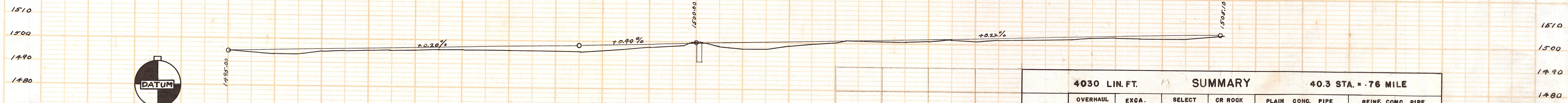
**TYPICAL SECTION**



PLAN  
REVISIONS  
DATE  
BY  
NO.

PROFILE  
REVISIONS  
DATE  
BY  
NO.

Road Appr. Lt. Cr. Rock 2 Cu. Yd.  
Road Appr. Rt. Cr. Rock 2 Cu. Yd.  
Road Appr. Lt. Cr. Rock 2 Cu. Yd.  
Road Appr. Rt. Cr. Rock 2 Cu. Yd.  
2 Road Appr. Lt. Cr. Rock 4 Cu. Yds.  
Road Appr. Lt. Cr. Rock 2 Cu. Yd.  
2 Road Appr. Lt. Cr. Rock 4 Cu. Yd.  
Road Appr. Lt. Cr. Rock 2 Cu. Yd.  
Road Appr. Rt. Cr. Rock 2 Cu. Yd.  
Road Appr. Rt. Cr. Rock 2 Cu. Yd.  
Road Appr. Rt. Cr. Rock 2 Cu. Yd.  
Road Appr. Rt. Cr. Rock 2 Cu. Yd.  
Road Appr. Lt. Cr. Rock 2 Cu. Yd.  
Road Appr. Rt. Cr. Rock 2 Cu. Yd.  
Road Appr. Lt. Cr. Rock 2 Cu. Yd.  
Road Appr. Rt. Cr. Rock 2 Cu. Yd.



MILE	4030 LIN. FT. SUMMARY				40.3 STA. = .76 MILE			
	OVERHAUL M. CU. YD STAS.	EXCA. STRUC. CU. YDS.	SELECT RDWAY BORROW CU. YDS.	CR ROCK 3/4 MINUS CU. YDS.	PLAIN CONG. PIPE		REINF. CONG. PIPE	
				12"	18"	12"	18"	
				LIN. FT.	LIN. FT.	LIN. FT.	LIN. FT.	
1 (Part)	211.42	55	5483	780	141	21	36	33
<b>TOTAL</b>	<b>211.42</b>	<b>55</b>	<b>5483</b>	<b>780</b>	<b>141</b>	<b>21</b>	<b>36</b>	<b>33</b>

