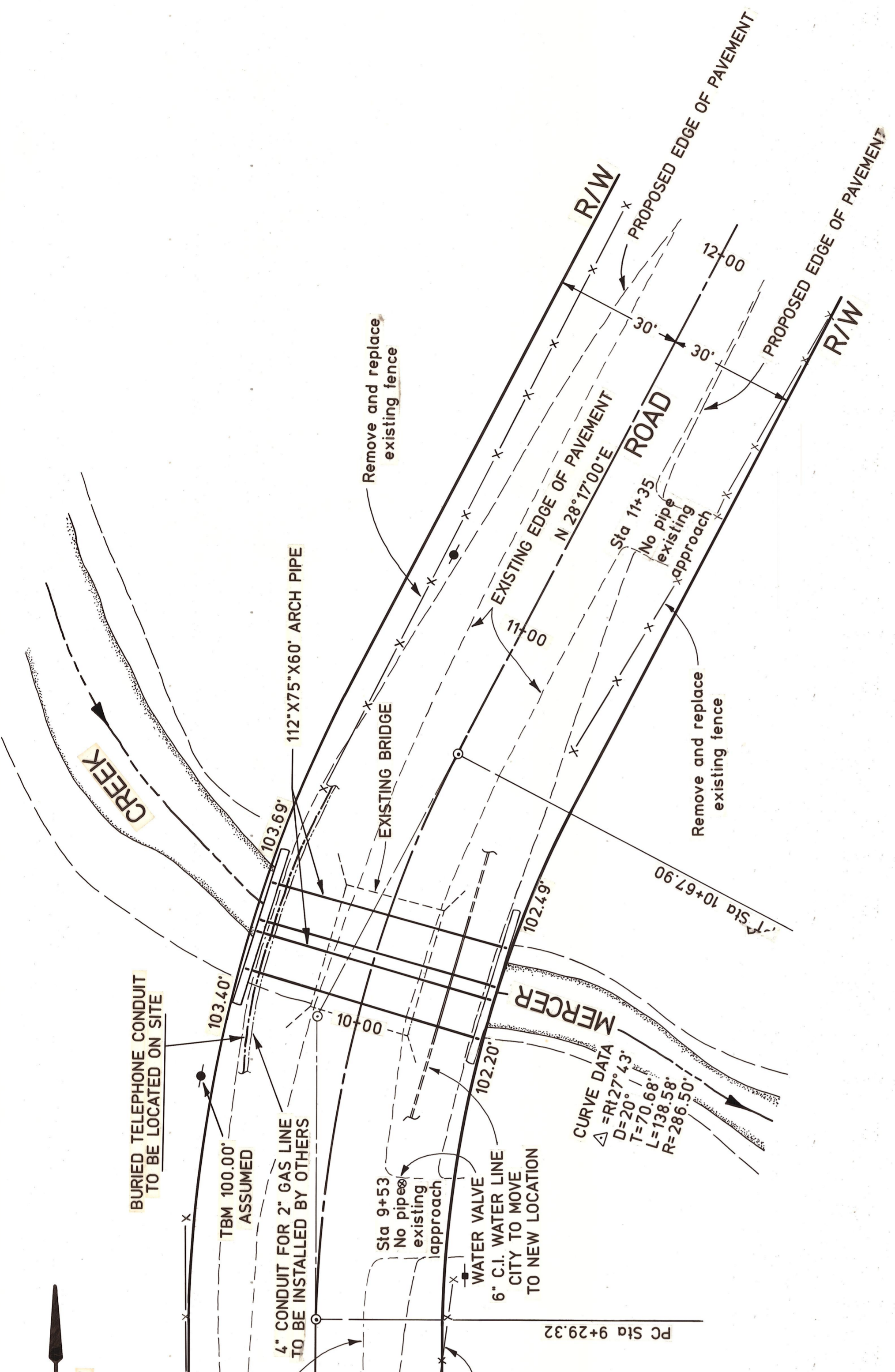


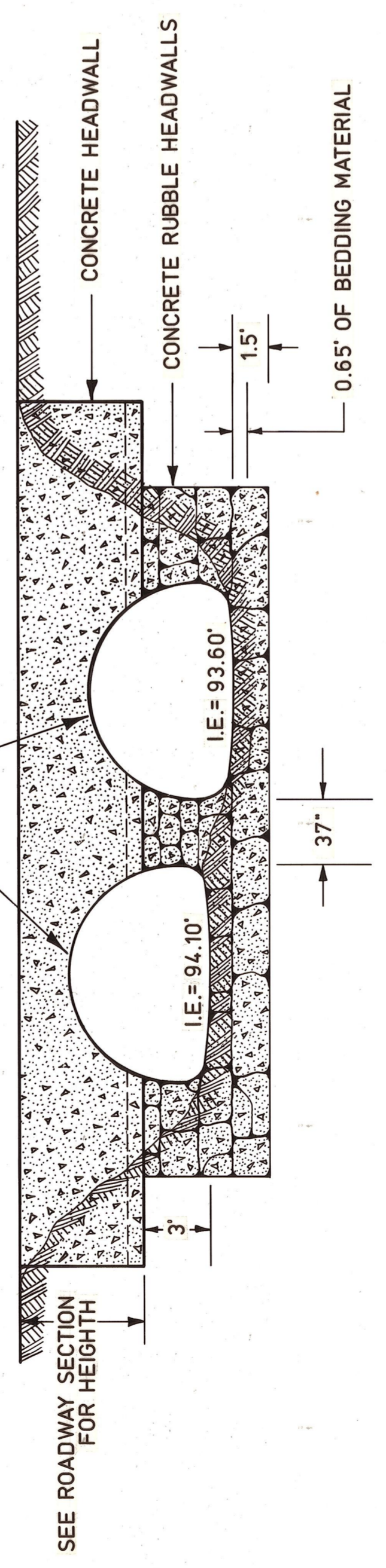
DEPARTMENT OF PUBLIC WORKS
KITTITAS COUNTY
 ELLENSBURG, WASHINGTON
 ANDERSON ROAD
 BRIDGE NO.78021
 OVER MERCER CREEK

SCALE: H 1"=20'
 V 1"=5'

DRAWN BY J.M. DATE JANUARY 1987 SHEET 1 OF 1
 APPROVED: *[Signature]* DATE 01/14/87 DIRECTOR OF PUBLIC WORKS



SCALE 1"=20'



NOTE: SEE PLAN VIEW FOR TOP OF CONCRETE HEADWALL ELEVATIONS

