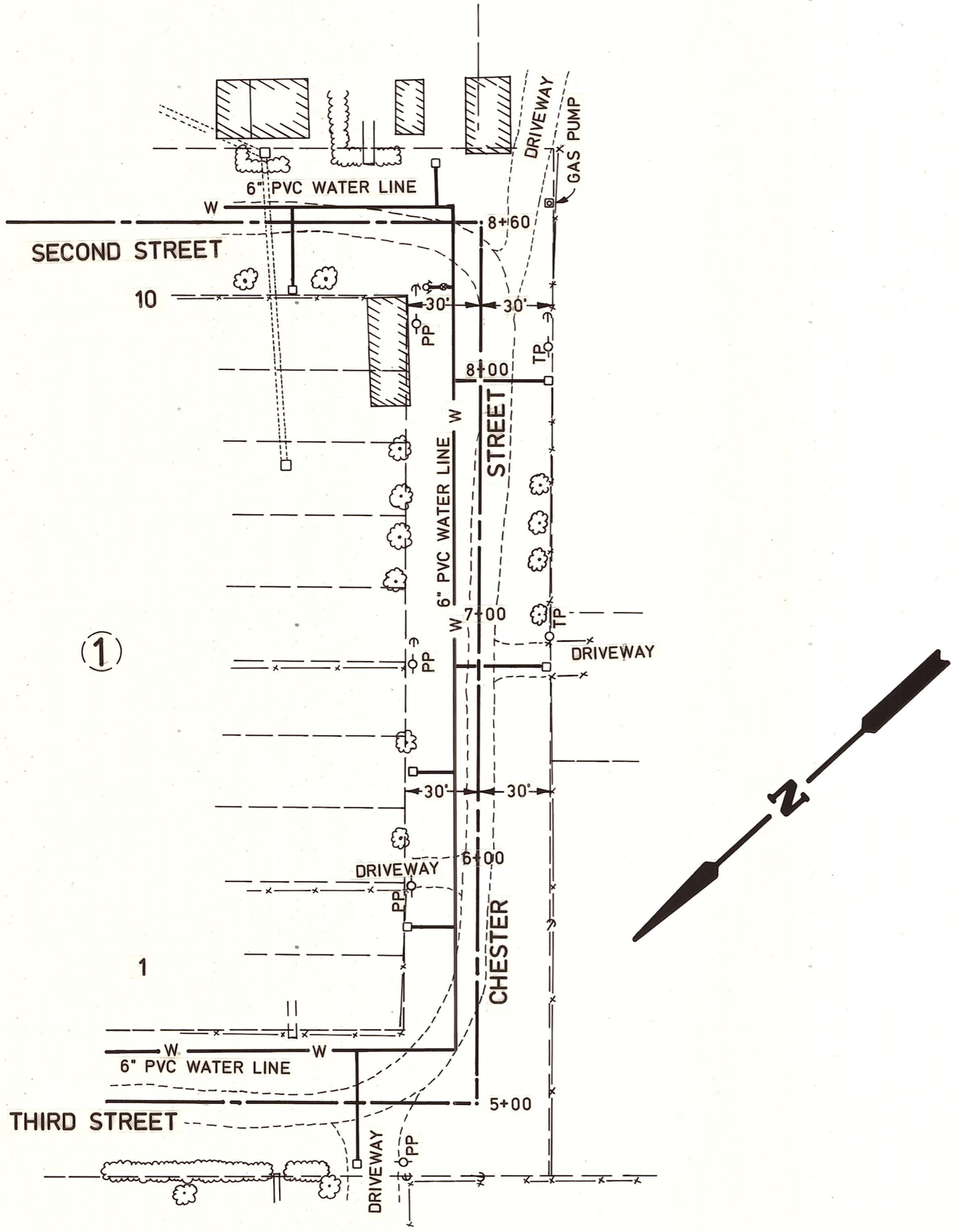
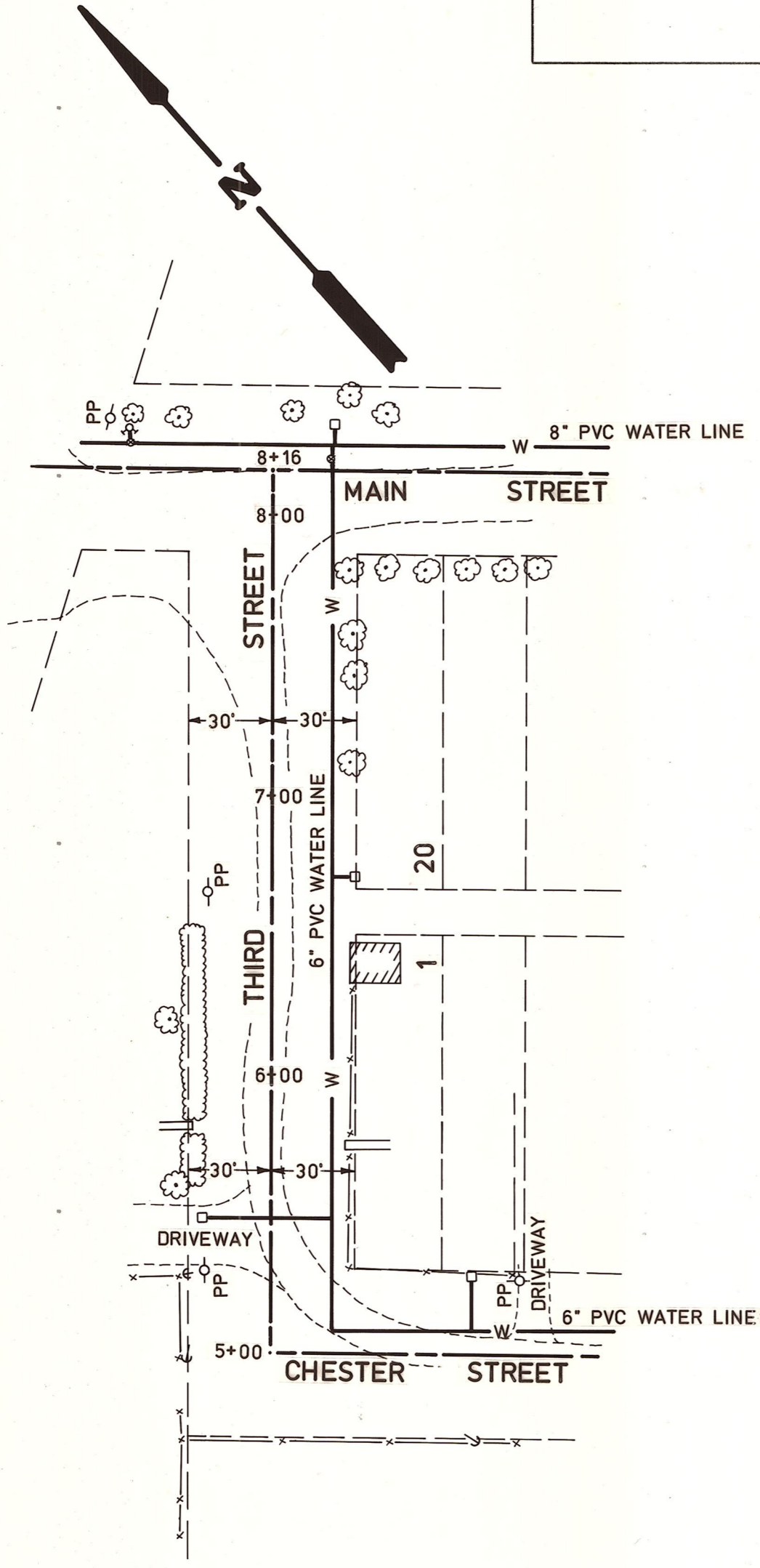
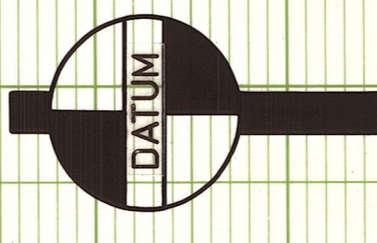


Sec. 11 T.18N., R.17E., W.M.

- LEGEND**
- WATER METER
  - WATER VALVE
  - FIRE HYDRANT
  - GAS PUMP
  - IRRIGATION DITCH
  - IRRIGATION WATER CHECK
  - TP ○ TELEPHONE POLE
  - PP ○ POWER POLE
  - FENCE
  - R/W LINE
  - EDGE OF PAVEMENT



DEPARTMENT OF PUBLIC WORKS  
**KITTITAS COUNTY**  
 ELLENSBURG, WASHINGTON  
 THORP TOWNSITE  
 CHESTER STREET NO.56420  
 THIRD STREET NO.54310  
 SCALE:  $\frac{H}{V}$   $\frac{1''=50'}{1''=5'}$  C.R.P. 74-87  
 DRAWN BY J.N. DATE DECEMBER 1987 SHEET OF  
 APPROVED: \_\_\_\_\_ DATE \_\_\_\_\_ PUBLIC WORKS DIRECTOR \_\_\_\_\_



USGS BRASS CAP P-1  
 SOUTHEAST CORNER OF  
 SECOND STREET AND  
 RAILROAD STREET IN  
 THE TOWN OF THORP  
 ELEV. 1633.15

<b>PLAN</b>	
DATE	BY
DESIGNED	CHECKED
PLOTTED	IN CHARGE
NO. _____	DATE _____

<b>PROFILE</b>	
DATE	BY
DESIGNED	CHECKED
PLOTTED	IN CHARGE
NO. _____	DATE _____