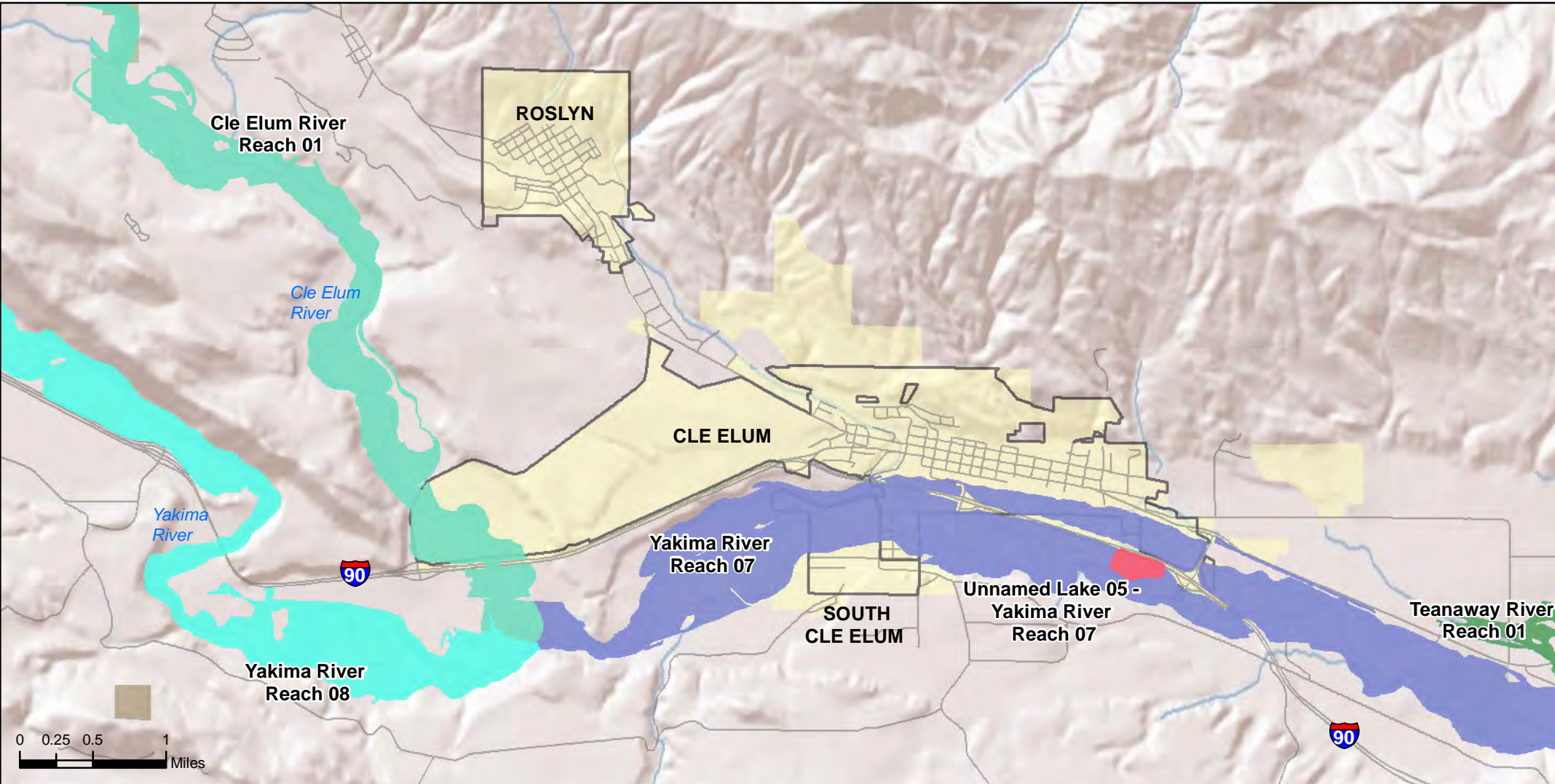
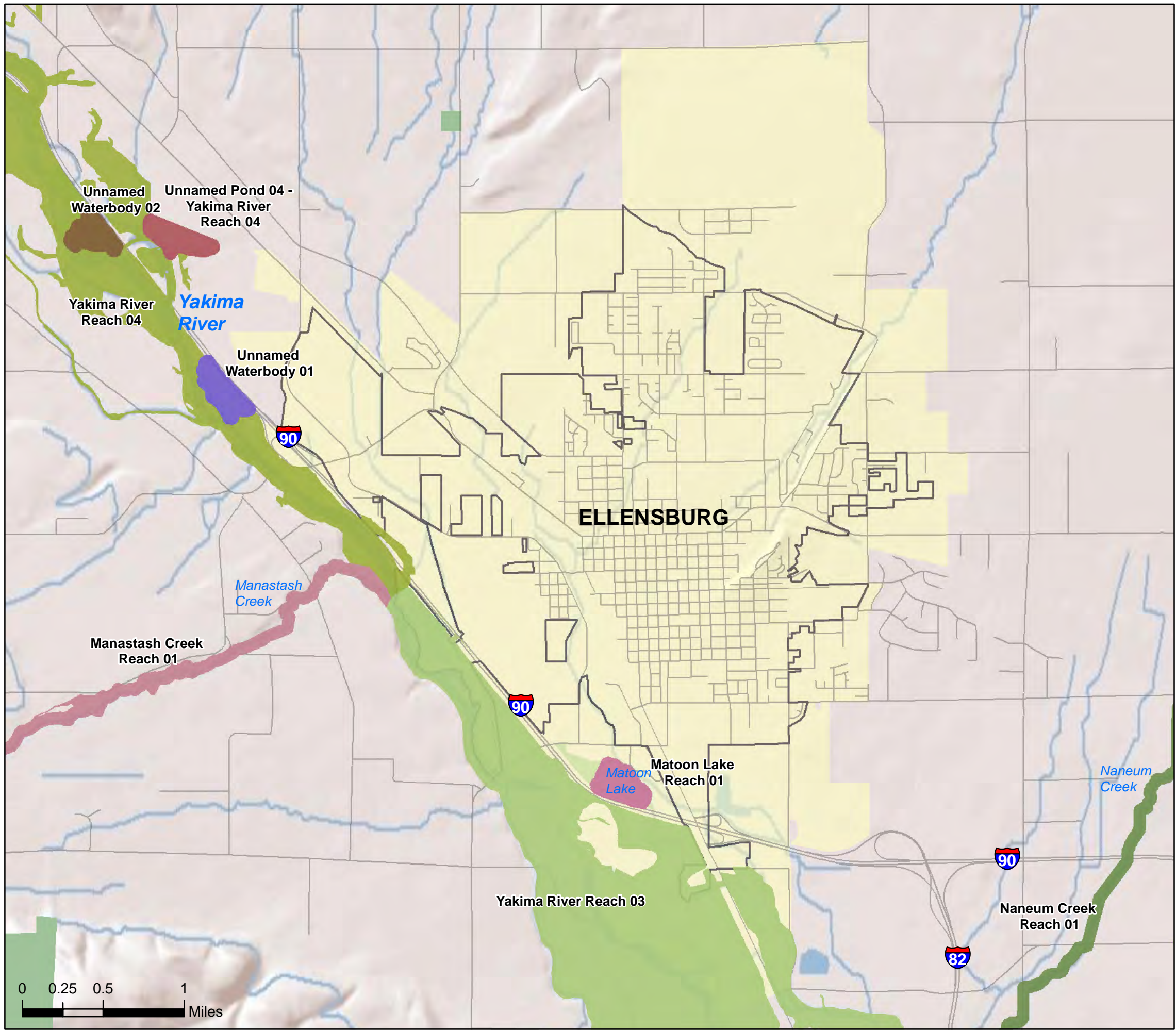
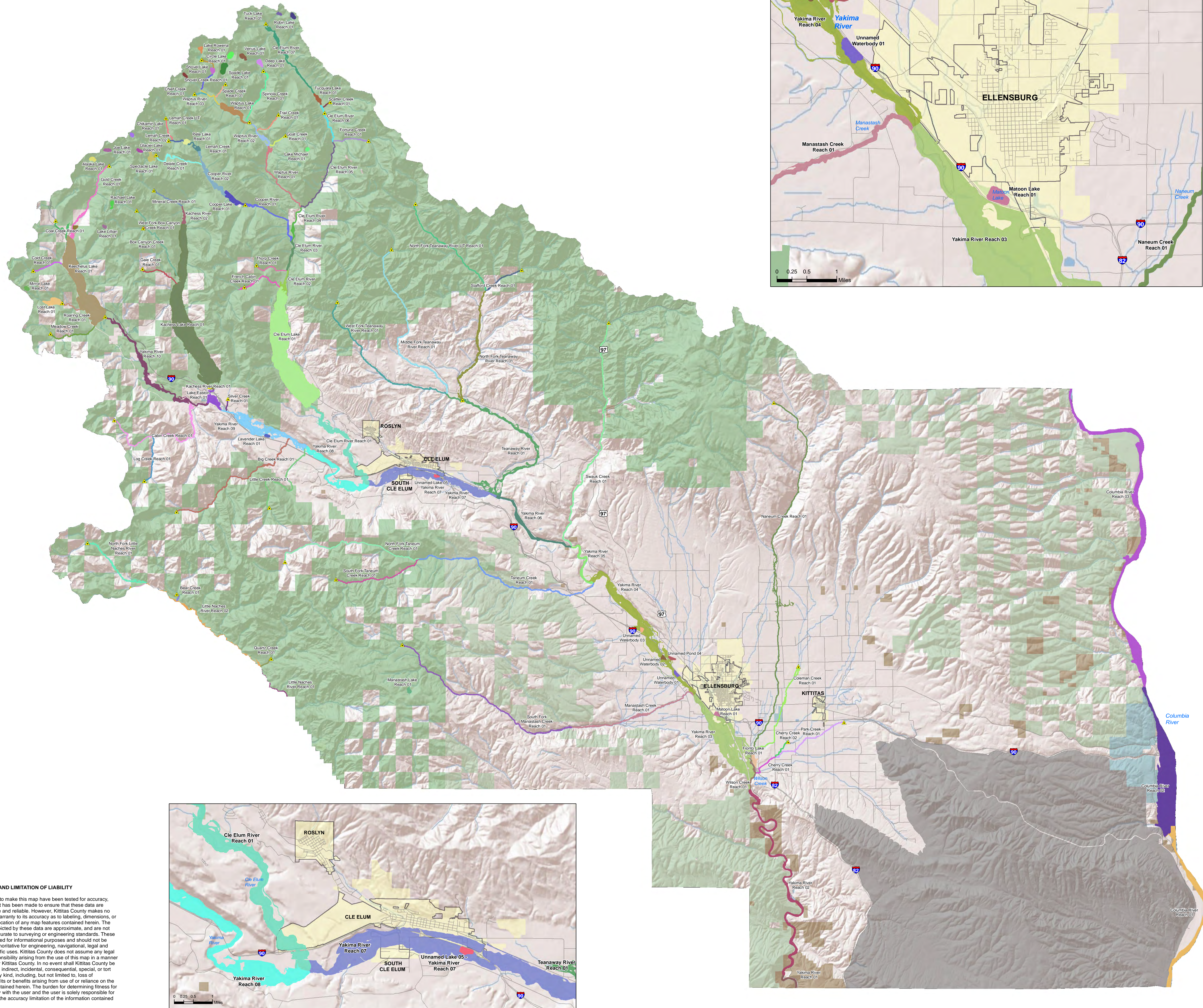


Map 2: Preliminary Reach Breaks
Kittitas County Regional SMP Update



- Legend**
- 20 cfs Upstream Limits (USGS, 1998)
 - Reach Breaks (Various Colors)
 - Waterbodies
 - Major Roads
 - Cities
 - Urban Growth Areas
 - US Bureau of Land Management
 - US Dept. of Defense
 - US Forest Service
 - WDFW
 - State Parks
 - County Boundary

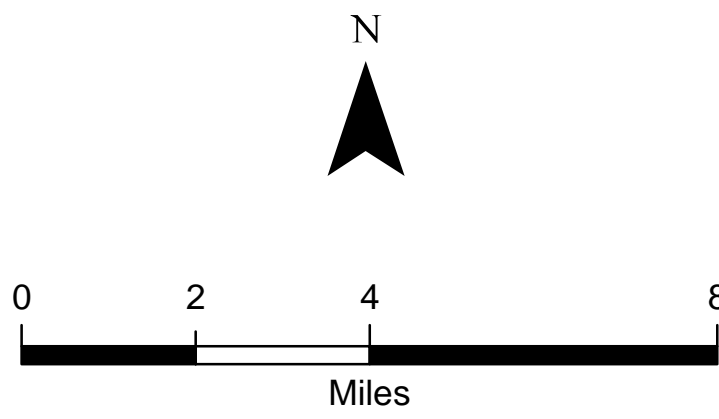
Shoreline Inventory Area (Reaches) includes:

- Rivers and Streams with mean annual flow of over 20 cubic feet per second.
- Lakes and reservoirs exceeding 20 acres.
- Associated wetlands of these areas
- Lands extending landward 200 feet from the ordinary high water mark, floodways and floodplain areas

SMA Grant Agreement No. G1200054
Task 2.1
Coordinate System: State Plane NAD1983 (Ft)
Washington South FIPS 4602

NOTE: Map data shown here are the property of the sources listed below. Inaccuracies may exist, and ESA implies no warranties or guarantees regarding any aspect of data depiction.

Data Sources: ESA, 2012; Kittitas County, 2011; Ecology, 2010; DNR, 2007; ESRI, 2010.



Map 2: Preliminary Reach Breaks
Kittitas County Regional SMP Update

Kittitas County, Washington
February 2012

DRAFT

DISCLAIMER AND LIMITATION OF LIABILITY

The data used to make this map have been tested for accuracy, and every effort has been made to ensure that these data are timely, accurate and reliable. However, Kittitas County makes no guarantee or warranty to its accuracy as to labeling, dimensions, or placement or location of any map features contained herein. The boundaries depicted by these data are approximate, and are not necessarily accurate to surveying or engineering standards. These data are intended for informational purposes and should not be considered authoritative for engineering, navigational, legal and other site-specific uses. Kittitas County does not assume any legal liability or responsibility arising from the use of this map in a manner not intended by Kittitas County. In no event shall Kittitas County be liable for direct, indirect, incidental, consequential, special, or tort damages of any kind, including, but not limited to, loss of anticipated profits or benefits arising from use of or reliance on the information contained herein. The burden for determining fitness for use lies entirely with the user and the user is solely responsible for understanding the accuracy limitation of the information contained in this map.